

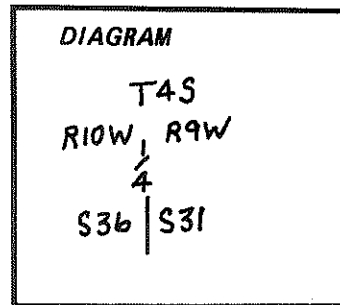
CERTIFIED RECORD OF LAND CORNER MONUMENTATION

History of original corner establishment:

Corner established by Henry Meldrum under Contract #301 dated Sept. 13, 1878. Record states:

Set fir post, 5 ft. long, 4 ins. diam., for 1/4 sec. cor. from which:

- A fir, 40 ins. diam., bears N82°E., 32 lks. dist.
- A fir, 6 ins. diam., bears S28°W, 53 lks. dist.



M. Whitmore, Deputy Surveyor, Tillamook Co., perpetuated and recorded this corner on August 30, 1957.

Description of corner evidence found:

Found 2X3X30 fir limb scribed "1/4S36" on W. and "1/4S" on E, set by M. Whitmore, 8/30/57.

Found 5/8" iron rod along side post set by L. Whitmore 3/22/72

Found original 44" snag, N82°E, 21 ft., with visible scribe marks "1/4S".

Original 41" fir, S28°W, 35 ft. with healed face.

44" spruce, N59°E, 43 ft. with healed face, set by M. Whitmore 8/30/57.

Description of monument and accessories established to perpetuate the original location of this corner:

Set a 30"X3" diam. aluminum cap 6" above the ground marked. Marked base of aluminum cap (break-away, magnet in top and bottom)

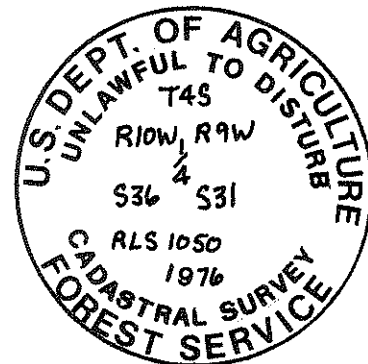
Buried 5/8" iron rod alongside aluminum cap.

Set marked post 30" high alongside aluminum cap.

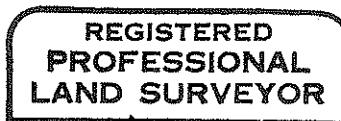
Set a 6 ft. fence post with an attention sign by cap.

Painted a 6" band of red paint around all BT's.

Nailed attention signs to the backside of all BT's.



Witnessed by F. Wratni.



L. W. Hunnemuller



Office of County Surveyor County of Tillamook
 State of OREGON, I hereby certify that the within instrument was filed in this office
 for record on the 20th day of August, 1975
[Signature] by [Signature]
 (COUNTY OFFICIAL) (DEPUTY)